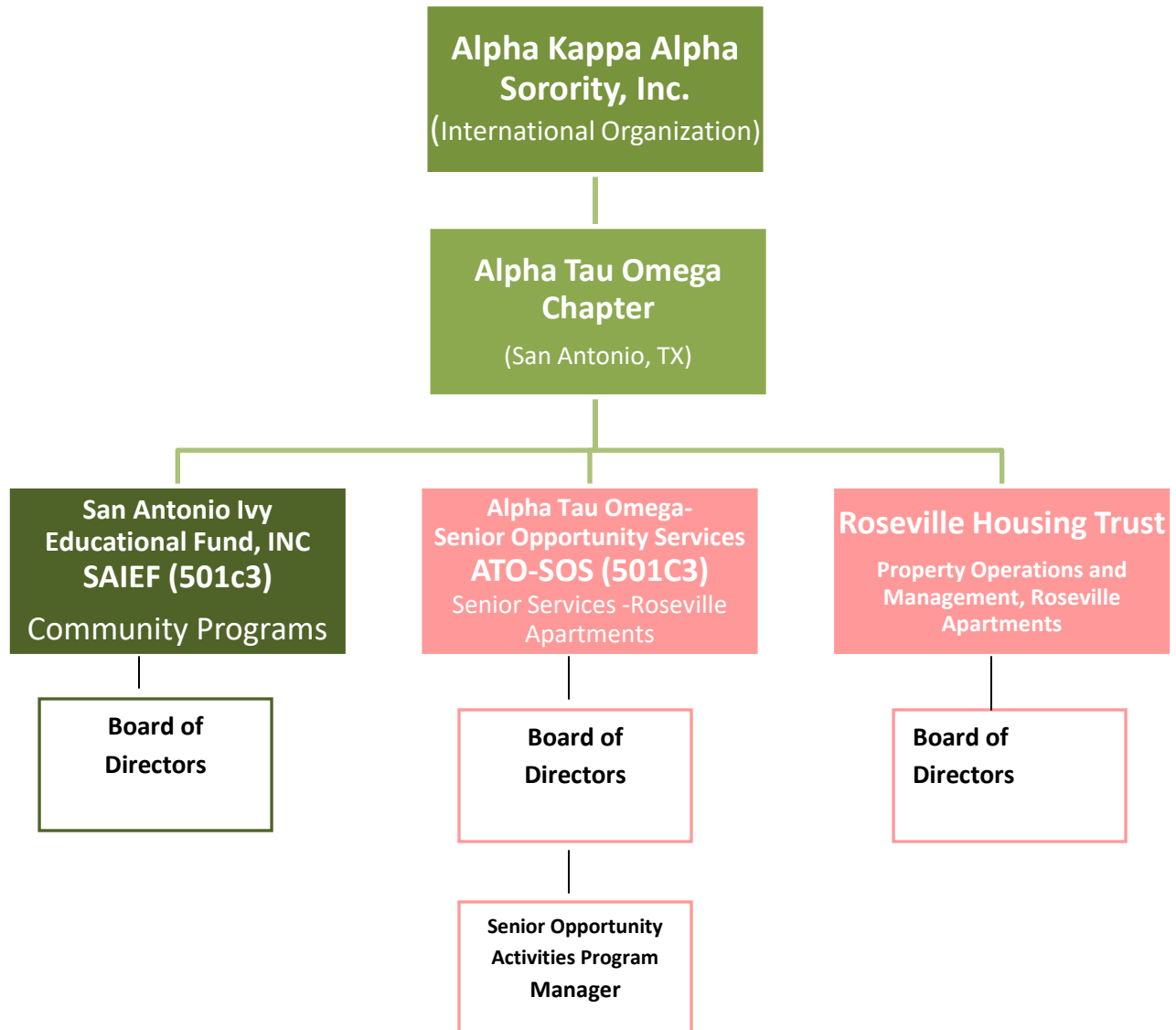


OUR ORGANIZATIONAL STRUCTURE



SAIEF Mission:

Our mission is dedicated to supporting individuals, organizations and programs that create and sustain opportunities for community advancement and quality of life improvement for the citizens of San Antonio and Bexar County.

ATO-SOS Mission:

Our mission is to provide organized services and program support for low income and or disabled elderly citizens (60+) at the Roseville Apartment Complex. Through a Service Activity coordinator such services as the Senior Nutritional Meals and Lunch programs, socialization and recreational activities and other interactive activities which adds to their daily well-being.

Roseville Trust Mission:

Our mission is to oversee property and facilities management for the Roseville Seniors Apartment Complex. Working with a Property Management Company, we ensure safe and secure property management and operations. We work closely with the ATO-SOS board to respond to senior property needs.